



**A&N CORPORATION**

High Vacuum Manufacturers Since 1965



# **TRI-SEAL**

C A T A L O G

Vacuum Technology Distribution

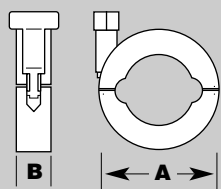


TRI-SEAL FLANGE SYSTEM

	Page
<b>INTRODUCTION</b> .....	1-2
<b>CLAMPS:</b>	
<b>HINGED QUICK CLAMP TYPE 3/4" - 2"</b>	
Aluminum - Elastomer Seal Only .....	3
Aluminum - Stainless Trim - Elastomer or Metal Seal .....	3
All Stainless - Elastomer or Metal Seal High Heat .....	3
<b>SEALS:</b>	
<b>METAL</b>	
3/4" - 2" Aluminum .....	5
3/4" - 2" Copper .....	5
3/4" - 2" Stainless Steel .....	6
<b>ELASTOMER</b>	
3/4" - 2" Stainless/Viton .....	5
3/4" - 2" Stainless/Buna N .....	5
3/4" - 2" Stainless/Silicone .....	5
<b>ADAPTIVE ELASTOMER SEAL</b>	
3/4" - 2" Stainless/Viton .....	4
3/4" - 2" Stainless/Buna N .....	4
3/4" - 2" Stainless/Silicone .....	4
<b>REPLACEMENT "O" RINGS</b>	
3/4" - 2" Viton .....	5
3/4" - 2" Buna N .....	5
3/4" - 2" Silicone .....	5
Replacement "O" Ring, Adaptive Seals .....	5
<b>FLANGES:</b>	
<b>QUICK CLAMP STYLE</b>	
Short Weld Flange, 3/4" - 2" .....	3
Long Butt Flange, 1/2" - 2" .....	3
Unbored Stub Flange, 3/4" - 2" .....	4
Blank Flange, 3/4" - 2" .....	4
Reducer Weld Flange, 1/2" - 2" .....	4
<b>ADAPTORS:</b>	
Tri-Seal to Female 1/8" NPT .....	6
Tri-Seal to Female 1/4" NPT .....	7
Tri-Seal to Male Pipe 1/8" - 1" NPT .....	6
Tri-Seal to Plastic or Rubber Hose .....	6
Tri-Seal to Quick Coupling 1/4" - 2" .....	7
Tri-Seal to CF Flange .....	7
Tri-Seal to ASA Flange with Groove .....	8
Tri-Seal to ASA Flange without Groove .....	8
Tri-Seal to LF (MF) ISO Universal Flange .....	8
Tri-Seal to Welch Pump Adaptor .....	8
Tri-Seal Reducers - Stainless Steel .....	9
Tri-Seal Nipples (Straight Sections) .....	9
<b>TRI-SEAL FLEXIBLE SECTIONS:</b>	
Bellows, 3/4" - 2" .....	9
Thin Wall Stainless Hose - 10", 20" and 40" Lengths .....	9
Clear Reinforced PVC Hose .....	9
<b>TRI-SEAL 45° ELBOWS:</b>	
3/4" - 2" .....	10
<b>TRI-SEAL 90° ELBOWS:</b>	
3/4" - 2" .....	10
<b>TRI-SEAL 180° RETURN:</b>	
3/4" - 2" .....	10
<b>TRI-SEAL TEES:</b>	
3/4" - 2" .....	10
<b>TRI-SEAL CROSSES:</b>	
3/4" - 2" .....	10



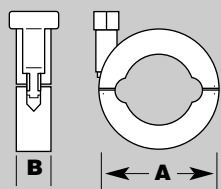
# TRI-SEAL CLAMPS



- Tri-Seal clamp with hex nut and ss/trim, 3/4" - 2"
- For elastomer or metal seal

## QUICK FLANGE ALUMINUM CLAMP ALL STAINLESS TRIM & HEX NUT

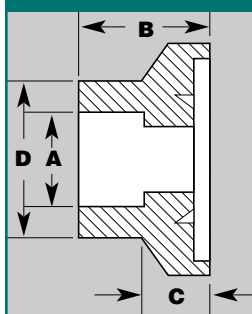
PART NUMBER	TUBE SIZE	TUBE		UNIT PRICE
		A	B	
TS16-075-C	1/2" & 3/4"	2"	5/8	\$ 20.00
TS25-100-C	1"	2 1/2"	5/8	\$ 30.00
TS40-150-C	1 1/2"	3 3/4"	3/4	\$ 35.00
TS50-200-C	2"	4 1/4"	7/8	\$ 50.00



- Tri-Seal clamp -all stainless steel with hex nut, 3/4" - 2"
- For elastomer or metal seal
- High temperature - ultra high vacuum applications

## QUICK FLANGE STAINLESS STEEL CLAMP

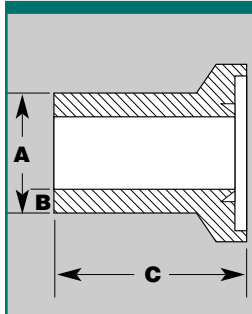
PART NUMBER	TUBE SIZE	TUBE		UNIT PRICE
		A	B	
TS16-075-SC	1/2" & 3/4"	2"	5/8	\$ 50.00
TS25-100-SC	1"	2 1/2"	5/8	\$ 60.00
TS40-150-SC	1 1/2"	3 3/4"	3/4	\$ 80.00
TS50-200-SC	2"	4 1/4"	7/8	\$ 90.00



- 304 Stainless
- Internal weld
- Self aligning
- Accepts standard tubing

## SHORT WELD FLANGE

PART NUMBER	TUBE SIZE	SET BACK				UNIT PRICE
		A	B	C	D	
TS16-075-SF	3/4"	.760	.500	.200	.875	\$ 10.50
TS25-100-SF	1"	1.010	.500	.200	1.250	\$ 12.00
TS40-150-SF	1 1/2"	1.510	.500	.210	1.750	\$ 15.00
TS50-200-SF	2"	2.010	.620	.225	2.250	\$ 23.00



- 304 Stainless
- Usable as half nipple
- Butt weld

## LONG BUTT FLANGE

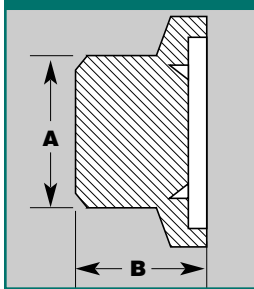
PART NUMBER	TUBE SIZE	TUBE			UNIT PRICE
		A	B	C	
TS16-050-LF	1/2"	.500	.065	1.575	\$ 15.50
TS16-075-LF	3/4"	.750	.065	1.575	\$ 15.50
TS25-100-LF	1"	1.000	.065	1.575	\$ 18.50
TS40-150-LF	1 1/2"	1.500	.065	1.575	\$ 21.00
TS50-200-LF	2"	2.000	.065	1.575	\$ 31.00

Vacuum Technology Distribution  
 1003 Alvin Weinberg Drive  
 Oak Ridge, Tennessee 37830  
 TEL (865) 481 3342  
 FAX (865) 481-3788  
 www.vacuumtechnology.com

Sales Department 1-800-704-4774



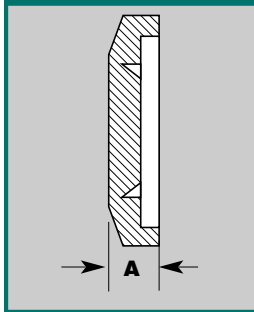
# TRI-SEAL SEALS



- 304 Stainless steel
- Machine bore or tap to application
- May be welded

## FLANGE - UNBORED STUB

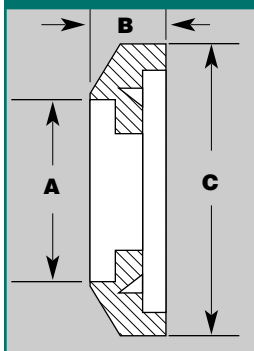
PART NUMBER	A		UNIT PRICE
	A	B	
TS16-075-US	.750	.500	\$ 11.00
TS25-100-US	1.250	.500	\$ 14.00
TS40-150-US	1.750	.500	\$ 15.00
TS50-200-US	2.250	.620	\$ 25.00



- 304 Stainless steel
- Not recommended for welding but may be modified (Use unbored stub)
- To close off unused ports

## FLANGE - BLANK

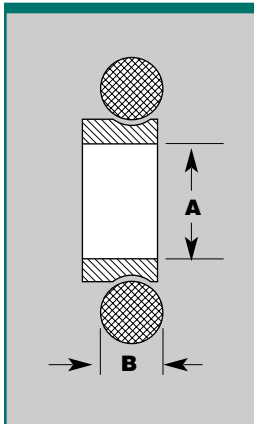
PART NUMBER	A		UNIT PRICE
	A		
TS16-075-SB	.3		\$ 9.00
TS25-100-SB	.3		\$ 11.00
TS40-150-SB	.3		\$ 14.00
TS50-200-SB	.3		\$ 20.00



- 304 Stainless steel
- Internal weld
- Accepts standard tubing
- Thin design

## TRI-SEAL REDUCER WELD FLANGE

PART NUMBER	TUBE SIZE	A			UNIT PRICE
		A	B	C	
TS25x10-050	1"x1/2"	.510	.300	1.57	\$ 12.00
TS25x16-075	1"x3/4"	.760	.300	1.57	\$ 12.00
TS40x16-075	1 1/2"x3/4"	.760	.300	2.16	\$ 15.00
TS40x25-100	1 1/2"x1"	1.010	.300	2.16	\$ 15.00
TS50x25-100	2"x1"	1.010	.300	2.95	\$ 23.00
TS50x40-150	2"x1 1/2"	1.510	.300	2.95	\$ 23.00



- 304 Stainless
- Replaceable "O" ring
- Adapts Tri-Seal to ISO
- Buna "N" - 100° C Max.
- Viton - 200° C Max.
- Silicone - 200° C Max. Chemically resistant

## ADAPTIVE ELASTOMER SEAL ASSEMBLY 3/4" - 2"

PART NUMBER	ADD SUFFIX TO ORDER			A		PRICE		
	VITON	BUNA	SILICONE	A	B	VITON	BUNA	SILICONE
TSxISO16-AES	V	B	S	.63	.139	\$ 8.00	\$ 7.00	\$ 7.50
TSxISO25-AES	V	B	S	.98	.139	\$ 9.00	\$ 8.00	\$ 8.50
TSxISO40-AES	V	B	S	1.57	.139	\$12.00	\$ 10.00	\$11.00
TSxISO50-AES	V	B	S	1.97	.139	\$15.00	\$ 12.00	\$13.00



Vacuum Technology Distribution  
 1003 Alvin Weinberg Drive  
 Oak Ridge, Tennessee 37830  
 TEL (865) 481 3342  
 FAX (865) 481-3788  
 www.vacuumtechnology.com

**Sales Department 1-800-704-4774**

Most Major Cards Accepted





# TRI-SEAL SEALS

- 304 Stainless steel
- Replacement "O" ring
- Buna "N" - 100° C Max.
- Viton - 200° C Max.
- Silicone - 200° C Max. Chemically resistant

## ELASTOMER SEAL ASSEMBLY

PART NUMBER	ADD SUFFIX TO ORDER			A	B	PRICE		
	VITON	BUNA	SILICONE			VITON	BUNA	SILICONE
TS16-075-ES	V	B	S	.650	.140	\$ 6.00	\$ 5.00	\$ 5.50
TS25-100-ES	V	B	S	.950	.140	\$ 7.00	\$ 6.00	\$ 6.50
TS40-150-ES	V	B	S	1.510	.140	\$10.00	\$ 8.00	\$ 9.00
TS50-200-ES	V	B	S	2.010	.210	\$13.00	\$10.00	\$11.00

- Buna "N" - 100° C Max.
- Viton - 200° C Max.
- Silicone - 200° C Max. Chemically resistant

## REPLACEMENT "O" RINGS - ELASTOMER SEALS

PART NUMBER	ADD SUFFIX TO ORDER			STD. #	A	B	PRICE		
	VITON	BUNA	SILICONE				VITON	BUNA	SILICONE
TS16-075-O	V	B	S	2-210	.139	.73	\$ 2.40	\$ .50	\$ .70
TS25-100-O	V	B	S	2-215	.139	1.04	\$ 2.90	\$ .60	\$ 1.25
TS40-150-O	V	B	S	2-223	.139	1.60	\$ 3.60	\$ .75	\$ 1.60
TS50-200-O	V	B	S	2-227	.139	2.10	\$ 4.60	\$ .80	\$ 1.80

## ADAPTIVE SEAL

TSxISO16-O	V	B	S	2-312	.139	.60	\$ 4.20	\$ 1.25	\$ 1.40
TSxISO25-O	V	B	S	2-317	.139	.91	\$ 4.50	\$ 1.35	\$ 1.50
TSxISO40-O	V	B	S	2-325	.139	1.97	\$ 6.25	\$ 1.45	\$ 2.10
TSxISO50-O	V	B	S	2-329	.139	1.97	\$ 8.50	\$ 1.55	\$ 2.80

- Preserves integrity of internal sealing groove for multiple flange uses.
- Frequent replacement of seal recommended.

## METAL SEALS - ALUMINUM

PART NUMBER	A	UNIT PRICE
TS16-075-MS-A	.75	\$ 5.00
TS25-100-MS-A	1.00	\$ 6.00
TS40-150-MS-A	1.50	\$ 7.00
TS50-200-MS-A	2.00	\$ 8.00

- Preserves integrity of internal sealing groove for multiple flange uses.
- Frequent replacement of seal recommended.

## METAL SEALS - COPPER

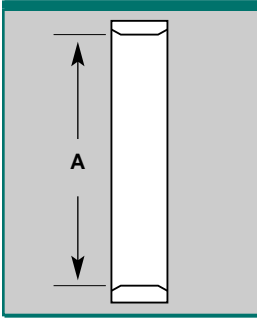
MODEL NUMBER	A	UNIT PRICE
TS16-075-MS-C	.75	\$ 5.00
TS25-100-MS-C	1.00	\$ 6.00
TS40-150-MS-C	1.50	\$ 7.00
TS50-200-MS-C	2.00	\$ 8.00

**Vacuum Technology Distribution**  
 1003 Alvin Weinberg Drive  
 Oak Ridge, Tennessee 37830  
 TEL (865) 481 3342  
 FAX (865) 481-3788  
[www.vacuumtechnology.com](http://www.vacuumtechnology.com)

Sales Department 1-800-704-4774



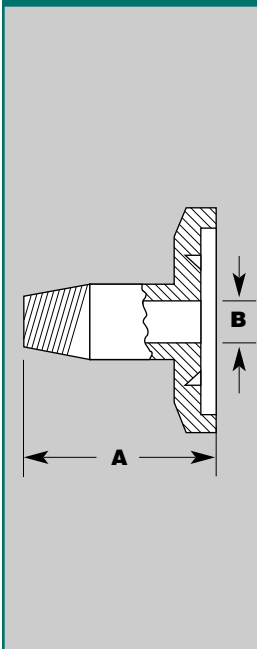
# TRI-SEAL SEALS/ADAPTORS



- Best suited for highly corrosive applications
- Recommended for cryogenic applications
- Not recommended for multiple uses.

## METAL SEALS - 304 STAINLESS STEEL

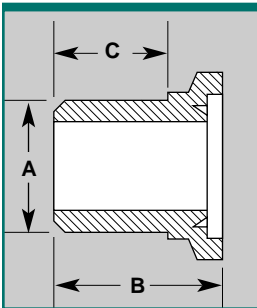
MODEL NUMBER	A	UNIT PRICE
TS16-075-MS-S	.75	\$ 5.00
TS25-100-MS-S	1.00	\$ 6.00
TS40-150-MS-S	1.50	\$ 7.00
TS50-200-MS-S	2.00	\$ 8.00



- Stubs have male 1/8" to 1" NPT threads
- 304 Stainless steel
- Slabbed for wrench
- Teflon tape recommended to seal thread

## TRI-SEAL TO MALE ADAPTOR - 304 STAINLESS STEEL

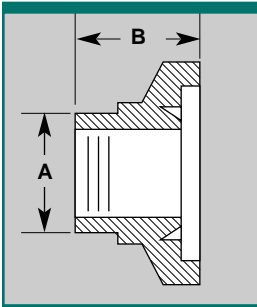
PART NUMBER	A	B	UNIT PRICE
TS16X12NPT	1.57	.255	\$ 45.00
TS16X25NPT	1.97	.360	\$ 49.00
TS25X12NPT	1.57	.255	\$ 46.00
TS25X25NPT	1.97	.360	\$ 49.00
TS25X50NPT	2.95	.625	\$ 55.00
TS25X75NPT	2.95	.825	\$ 78.00
TS40X12NPT	1.57	.255	\$ 52.00
TS40X25NPT	1.97	.360	\$ 52.00
TS40X50NPT	2.95	.625	\$ 62.00
TS40X75NPT	2.95	.825	\$ 83.00
TS40X100NPT	2.95	1.050	\$ 100.00
TS50X12NPT	1.57	.255	\$ 59.00
TS50X25NPT	1.97	.360	\$ 59.00
TS50X50NPT	2.95	.625	\$ 66.00
TS50X75NPT	2.95	.825	\$ 90.00
TS50X100NPT	2.95	1.050	\$ 105.00



- 304 Stainless steel
- Tri-Seal to PVC or rubber hose

## HOSE ADAPTOR - STAINLESS STEEL

PART NUMBER	HOSE SIZE	A	B	C	UNIT PRICE
TS16-050-SH	1/2"	.500	1.260	.790	\$ 21.00
TS16-075-SH	3/4"	.750	1.260	.790	\$ 21.00
TS25-100-SH	1"	1.000	1.500	1.020	\$ 26.00
TS40-150-SH	1 1/2"	1.500	1.970	1.500	\$ 31.00
TS50-200-SH	2"	2.000	2.170	1.610	\$ 40.00



- 304 Stainless steel
- 1/8" NPT female thread
- Fits most thermocouple gauges

## TRI-SEAL - ADAPTOR TO 1/8" NPT

PART NUMBER	A	B	UNIT PRICE
TS16-075-SP12	.62	.500	\$ 16.00
TS25-100-SP12	.88	.500	\$ 19.00
TS40-150-SP12	1.25	.500	\$ 27.00
TS50-200-SP12	1.75	.620	\$ 35.00

Vacuum Technology Distribution  
 1003 Alvin Weinberg Drive  
 Oak Ridge, Tennessee 37830  
 TEL (865) 481 3342  
 FAX (865) 481-3788  
 www.vacuumtechnology.com

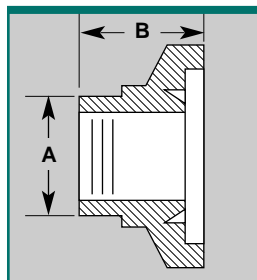
Sales Department 1-800-704-4774

Most Major Cards Accepted





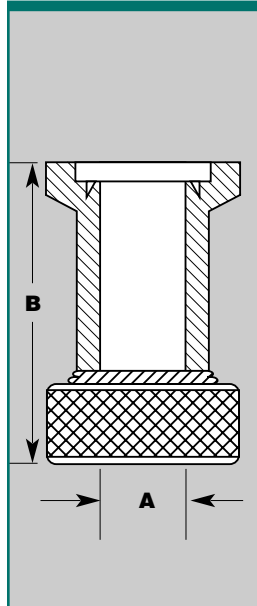
# TRI-SEAL ADAPTORS



- 304 Stainless steel
- 1/4" NPT female thread

## TRI-SEAL - ADAPTOR TO 1/4" NPT

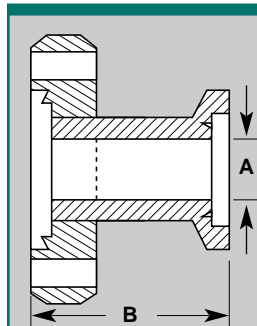
PART NUMBER	A	B	UNIT PRICE
TS16-075-SP25	.62	.500	\$ 17.00
TS25-100-SP25	.88	.500	\$ 20.00
TS40-150-SP25	1.25	.500	\$ 28.00
TS50-200-SP25	1.75	.620	\$ 36.00



- A&N Compression type quick connect for tube connections
- Stainless steel
- "O" Ring
- Use with tubulated gauges

## TRI-SEAL TO QUICK COUPLING 304 STAINLESS STEEL

PART NUMBER	TUBING SIZE	A	B	UNIT PRICE
TS16-075-Q25	1/4"	.265	1.4	\$ 55.00
TS16-075-Q50	1/2"	.515	1.5	\$ 64.00
TS16-075-Q75	3/4"	.765	1.8	\$ 70.00
TS25-100-Q50	1/2"	.515	1.5	\$ 67.00
TS25-100-Q75	3/4"	.765	1.8	\$ 72.00
TS25-100-Q100	1"	1.015	2.0	\$ 85.00
TS40-150-Q50	1/2"	.515	1.5	\$ 73.00
TS40-150-Q75	3/4"	.765	1.8	\$ 76.00
TS40-150-Q100	1"	1.015	2.0	\$ 87.00
TS40-150-Q112	1 1/8"	1.140	2.0	\$ 115.00
TS40-150-Q150	1 1/2"	1.515	2.4	\$ 165.00
TS50-200-Q75	3/4"	.765	1.8	\$ 87.00
TS50-200-Q100	1"	1.015	2.0	\$ 98.00
TS50-200-Q112	1 1/8"	1.140	2.0	\$ 127.00
TS50-200-Q150	1 1/2"	1.515	2.4	\$ 181.00
TS50-200-Q200	2"	2.015	2.875	\$ 195.00



## TRI-SEAL TO CF FLANGE

PART NUMBER	A	B	UNIT PRICE
TS16-075x133	1.750	.625	\$ 60.00
TS16-075x275	1.780	.625	\$ 64.00
TS25-100x275	1.780	.875	\$ 66.00
TS40-150x275	1.780	1.370	\$ 77.00
TS40-150x338	1.800	1.370	\$ 125.00
TS50-200x450	1.950	1.875	\$ 155.00

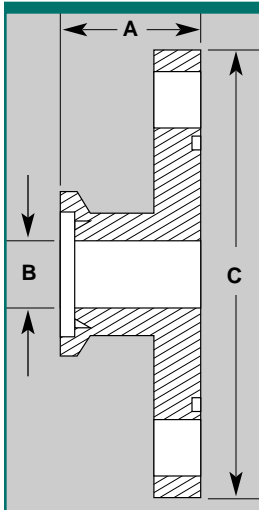


Sales Department 1-800-704-4774

Vacuum Technology Distribution  
 1003 Alvin Weinberg Drive  
 Oak Ridge, Tennessee 37830  
 TEL (865) 481 3342  
 FAX (865) 481-3788  
 www.vacuumtechnology.com



# TRI-SEAL FLANGES

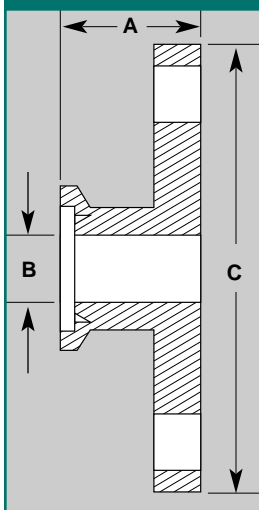


- 304 Stainless steel
- Helium leak checked
- Tri-Seal to ASA
- Standard with "O" ring groove

## TRI-SEAL TO ASA FLANGE WITH "O" RING GROOVE

MODEL NUMBER	A	B	C	UNIT PRICE
TS40x150ASA-G	1.810	1.330	5.00	\$ 150.00
TS40x200ASA-G	1.810	1.330	6.00	\$ 205.00
TS40x300ASA-G	1.810	1.330	7.50	\$ 250.00
TS50x150ASA-G	1.810	1.830	5.00	\$ 160.00
TS50x200ASA-G	1.810	1.830	6.00	\$ 220.00
TS50x300ASA-G	1.810	1.830	7.50	\$ 265.00

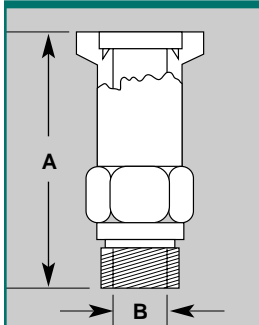
"O" Ring Groove - 1 1/2" ASA, 2.66 I.D. (2-231)  
 "O" Ring Groove - 2" ASA, 3.42 I.D. (2-327)  
 "O" Ring Groove - 3" ASA, 4.69 I.D. (2-247)  
 "O" Ring Groove - 4" ASA, 6.10 I.D. (2-258)  
 "O" Ring Groove - 6" ASA, 7.90 I.D. (2-265)



- 304 Stainless steel
- Helium leak checked
- Tri-Seal to ASA
- Standard without "O" ring groove

## TRI-SEAL TO ASA FLANGE WITHOUT "O" RING GROOVE

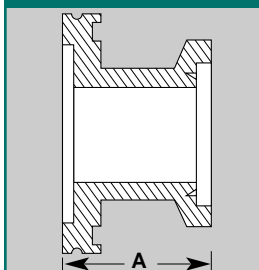
MODEL NUMBER	A	B	C	UNIT PRICE
TS40x150ASA	1.810	1.330	5.00	\$ 125.00
TS40x200ASA	1.810	1.330	6.00	\$ 180.00
TS40x300ASA	1.810	1.330	7.50	\$ 225.00
TS50x150ASA	1.810	1.830	5.00	\$ 140.00
TS50x200ASA	1.810	1.830	6.00	\$ 200.00
TS50x300ASA	1.810	1.830	7.50	\$ 245.00



- Replaces inlet hose connector
- Stainless steel
- Includes metal gasket

## ADAPTOR - WELCH PUMP

MODEL NUMBER	FOR USE WITH WELCH PUMP NO.	A	B	UNIT PRICE
TS16-075-WP1	1399, 1400, 1410	1.77	.45	\$ 65.00
TS16-075-WP2	1405	2.56	.562	\$ 75.00
TS25-100-WP1	1380, 1402, 1403, 8806, 8811, 8816, 8821	2.56	.562	\$ 75.00
TS40-150-WP1	1373, 1376, 8831	2.56	1.125	\$ 85.00
TS40-150-WP2	1374, 1397, 8851	2.56	1.375	\$ 95.00



- 304 Stainless steel
- Helium leak checked
- Tri-Seal to ISO LF (MF)
- Other sizes & combinations of material available

## TRI-SEAL TO ISO (MF) FLANGE

MODEL NUMBER	A	UNIT PRICE
TS40xLF63	1.825	\$ 145.00
TS50xLF63	1.825	\$ 155.00
TS50xLF80	1.825	\$ 180.00
TS50xLF100	1.825	\$ 210.00

Vacuum Technology Distribution  
 1003 Alvin Weinberg Drive  
 Oak Ridge, Tennessee 37830  
 TEL (865) 481 3342  
 FAX (865) 481-3788  
 www.vacuumtechnology.com

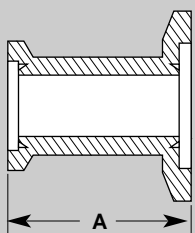
Sales Department 1-800-704-4774

Most Major Cards Accepted





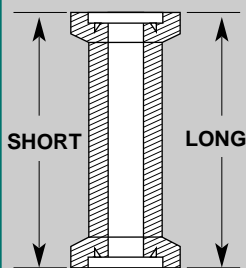
# TRI-SEAL FLEXIBLE SECTIONS



- Mates different Tri-Seal sizes
- 304 Stainless steel

## TRI-SEAL REDUCERS

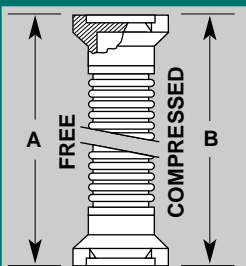
PART NUMBER	A	UNIT PRICE
TS25x16	1.75	\$ 40.00
TS40x16	1.75	\$ 43.00
TS50x16	1.75	\$ 46.00
TS40x25	1.75	\$ 45.00
TS50x25	1.75	\$ 48.00
TS50x40	1.75	\$ 52.00



- 304 Stainless steel
- Special lengths to order

## TRI-SEAL NIPPLES - STAINLESS STEEL

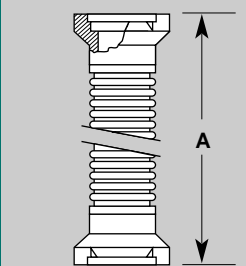
PART NUMBER	SHORT	LONG	UNIT PRICE
TS16-075-NS	3.15		\$ 39.00
TS16-075-NL		12.60	\$ 45.00
TS25-100-NS	3.94		\$ 44.00
TS25-100-NL		12.60	\$ 51.00
TS40-150-NS	5.12		\$ 55.00
TS40-150-NL		12.60	\$ 65.00
TS50-200-NS	5.51		\$ 66.00
TS50-200-NL		12.60	\$ 75.00



- 304 Stainless steel
- Special lengths to order

## TRI-SEAL TO STAINLESS BELLOWS

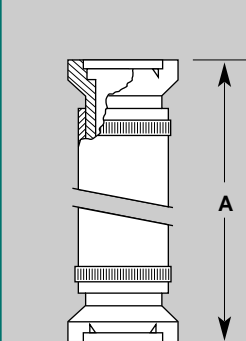
PART NUMBER	A	B	UNIT PRICE
TS16-075-F	3.94	3.07	\$ 61.00
TS25-100-F	3.94	3.07	\$ 74.00
TS40-150-F	3.94	2.93	\$ 84.00
TS50-200-F	3.94	3.11	\$ 104.00



- Unsheathed 304 Stainless steel
- Special lengths to order

## TRI-SEAL TO FLEXIBLE METAL HOSE THIN WALL

PART NUMBER	ADD SUFFIX FOR PROPER LENGTH		
	10"	20"	40"
TS16-075-MH	\$ 105.00	\$ 155.00	\$ 260.00
TS25-100-MH	\$ 115.00	\$ 180.00	\$ 300.00
TS40-150-MH	\$ 130.00	\$ 190.00	\$ 310.00
TS50-200-MH	\$ 160.00	\$ 225.00	\$ 360.00



- PVC tubing
- Clear, wire reinforced
- 304 Stainless steel flanges
- Hoses clamped on flange
- Ready to use, helium leak checked
- Good for exhaust lines
- Special lengths available

## TRI-SEAL TO PVC TUBING 20" & 40" LENGTHS

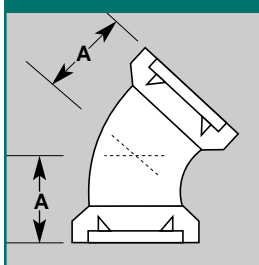
PART NUMBER	A	UNIT PRICE
TS16-075-PVC20	20"	\$ 67.00
TS16-075-PVC40	40"	\$ 73.00
TS25-100-PVC20	20"	\$ 75.00
TS25-100-PVC40	40"	\$ 86.00
TS40-150-PVC20	20"	\$ 91.00
TS40-150-PVC40	40"	\$ 115.00
TS50-200-PVC20	20"	\$ 125.00
TS50-200-PVC40	40"	\$ 150.00

Vacuum Technology Distribution  
 1003 Alvin Weinberg Drive  
 Oak Ridge, Tennessee 37830  
 TEL (865) 481 3342  
 FAX (865) 481-3788  
 www.vacuumtechnology.com

Sales Department 1-800-704-4774



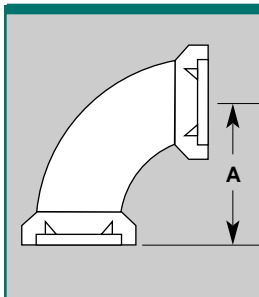
# TRI-SEAL ELBOWS, TEES & CROSSES



■ 304 Stainless steel

## TRI-SEAL TO 45° ELBOW

MODEL NUMBER	A	UNIT PRICE
TS16-075-E45	.910	\$ 44.00
TS25-100-E45	1.12	\$ 50.00
TS40-150-E45	1.68	\$ 69.00
TS50-200-E45	1.99	\$ 86.00

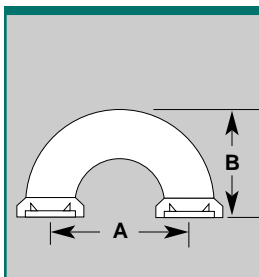


■ 304 Stainless steel

## TRI-SEAL TO 90° ELBOW

MODEL NUMBER	A	UNIT PRICE
TS16-075-E90	1.57	\$ 44.00
TS25-100-E90	1.97	\$ 50.00
TS40-150-E90	2.56	\$ 69.00
*TS50-200-E90	2.76	\$ 86.00

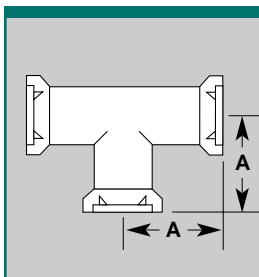
\*MITERED STYLE



■ 304 Stainless steel

## TRI-SEAL 180° RETURN

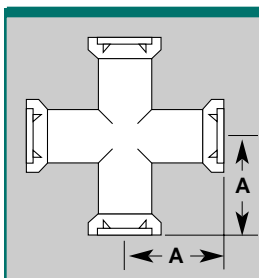
MODEL NUMBER	A	B	UNIT PRICE
TS16-075-E180	2.250	1.67	\$ 61.00
TS25-100-E180	3.000	2.17	\$ 66.00
TS40-150-E180	4.500	3.17	\$ 91.00
TS50-200-E180	6.000	4.17	\$ 198.00



■ 304 Stainless steel

## TRI-SEAL TEES

MODEL NUMBER	A	UNIT PRICE
TS16-075-T	1.57	\$ 75.00
TS25-100-T	1.97	\$ 83.00
TS40-150-T	2.56	\$ 105.00
TS50-200-T	2.76	\$ 133.00



■ 304 Stainless steel

## TRI-SEAL 4 WAY CROSSES

MODEL NUMBER	A	UNIT PRICE
TS16-075-X	1.57	\$ 105.00
TS25-100-X	1.97	\$ 127.00
TS40-150-X	2.56	\$ 160.00
TS50-200-X	2.76	\$ 210.00



Vacuum Technology Distribution  
 1003 Alvin Weinberg Drive  
 Oak Ridge, Tennessee 37830  
 TEL (865) 481 3342  
 FAX (865) 481-3788  
 www.vacuumtechnology.com

Sales Department 1-800-704-4774

Most Major Cards Accepted

